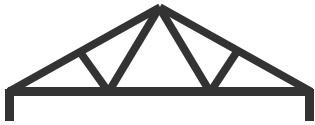


Truss Types – Chord / Web Profile Defined.



Type "A" – Fink, 4 Webs



Type "B" – Fink, 8 Webs



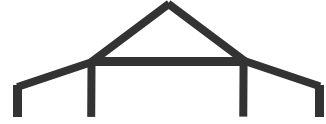
Type "C" – Cantilever



Type "D" - Dual Pitch or Bell



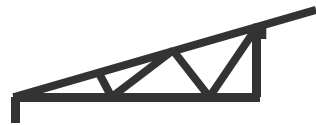
Type "E" – Dutch Gable



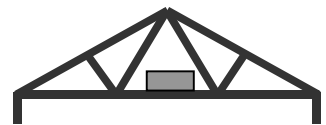
Type "F" – Farmhouse



Type "G" – Full Girder



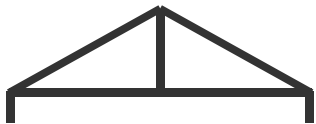
Type "H" – Hip



Type "I" – Hot Water Service



Type "J" – Jack



Type "K" – King Post



Type "L" – Lay-on or Valley



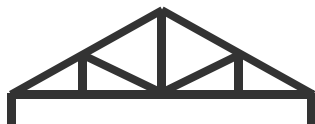
Type "M" – Mono



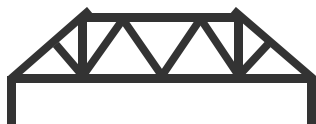
Type "N" – North Light



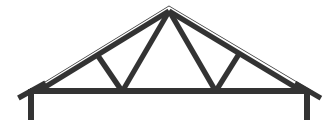
Type "P" – Parallel Chord



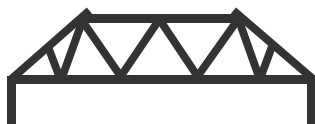
Type "Q" – Queen Post



Type "R" – Truncated Girder



Type "S" – Set Down Gable



"T" – Truncated Standard



"U" – Unequal/Assymmetric



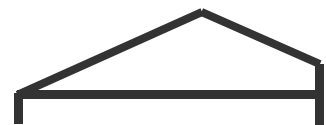
Type "V" – Scissor



Type "W" – Fink, 10+ Webs



Type "X" – Mansard



Type "Y" – Cut-Off